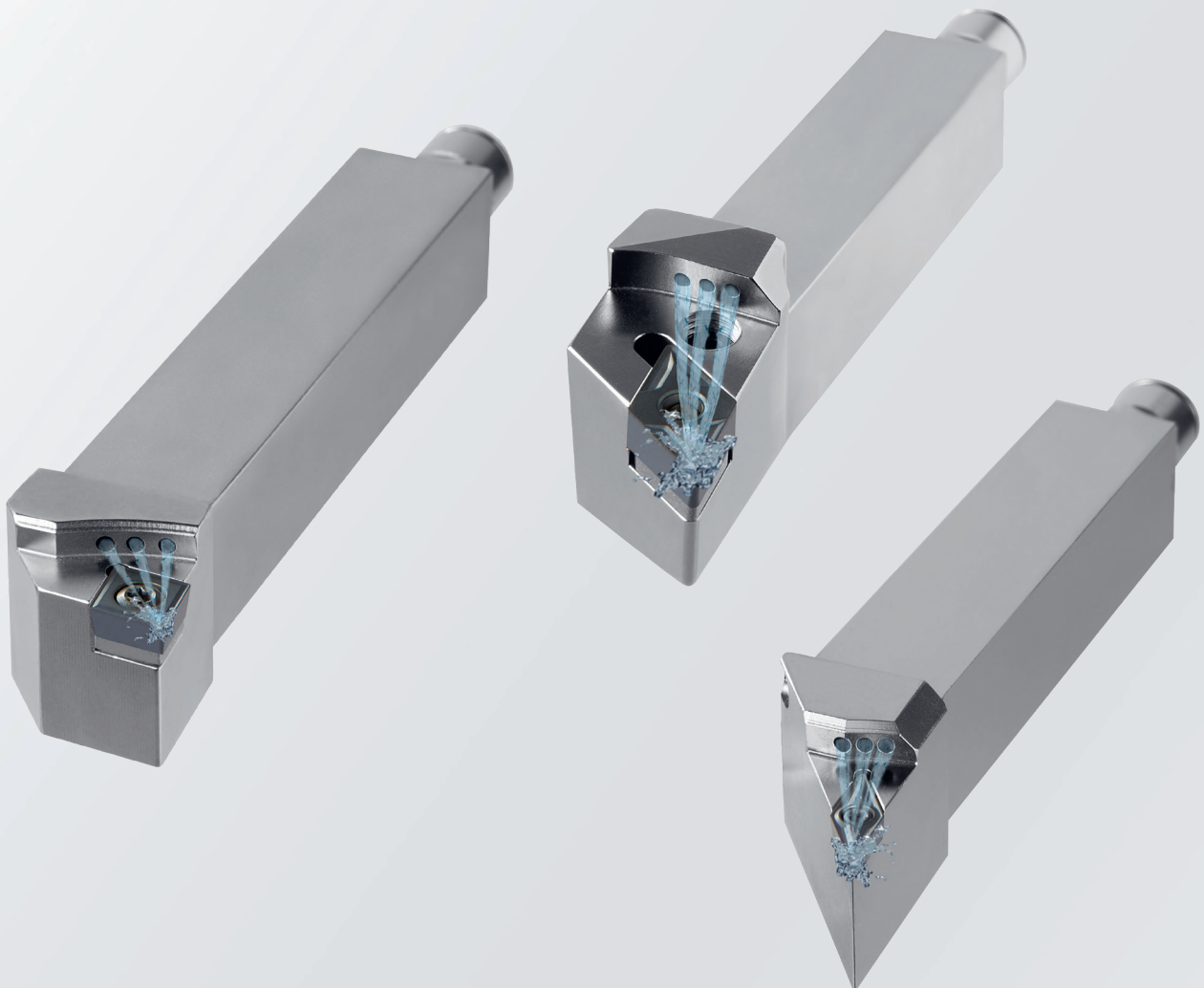
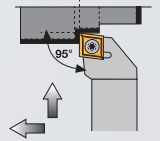
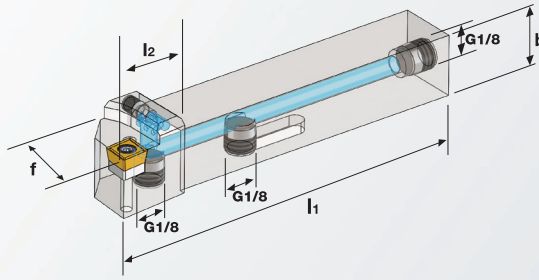


Drehhalter mit Kühlmittelzufuhr auf die Schneide

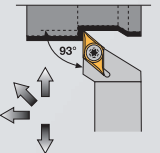
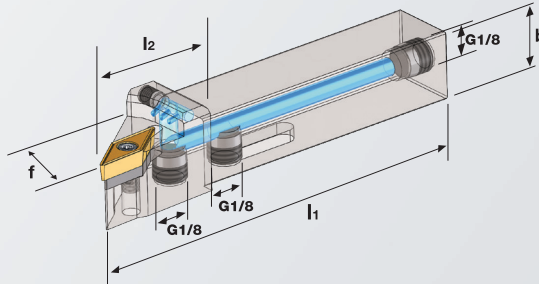
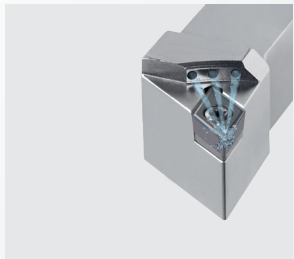


DREHHALTER MIT IK AUF DIE SCHNEIDE TYP ECO



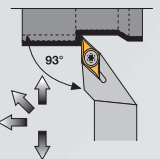
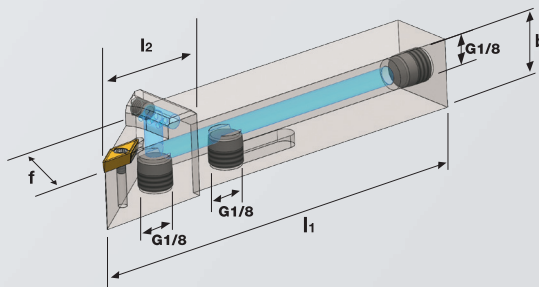
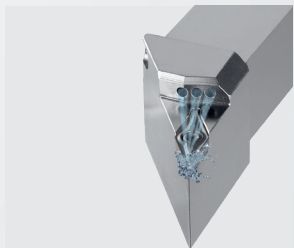
Stahlschaft

SCLCR/L	i (mm)			l1	l2	f						KG		STOCK
	h1	h2	b											
SCLCR/L 2020 K09 - IK ECO	20	20	20	125	17	25	CCMT CCGT 09T3...	US1111	GBS1111	SS1111	BT15	0,420		
SCLCR/L 2525 M12 - IK ECO	25	25	25	150	20	32	CCMT CCGT 1204...	US1221	GBS1221	SS1221	BT15	0,770		



Stahlschaft

SDJCR/L	i (mm)			l1	l2	f						KG		STOCK
	h1	h2	b											
SDJCR/L 2020 K11 - IK ECO	20	20	20	125	24	25	DCMT DCGT 11T3...	US2311	GBS1111	SS1111	BT15	0,408		
SDJCR/L 2525 M11 - IK ECO	25	25	25	150	27	32						0,735		

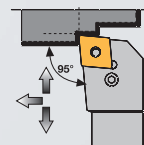
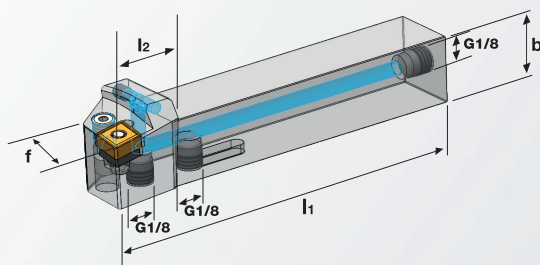


Stahlschaft

SVJCR/L	i (mm)			l1	l2	f						KG		STOCK
	h1	h2	b											
SVJCR/L 2020 K11 - IK ECO	20	20	20	125	23	25	VCMT VCGT 1103...	--	--	SS1751	BT08	0,373		
SVJCR/L 2020 K16 - IK ECO	20	20	20	125	29,5	25						0,380		
SVJCR/L 2525 M16 - IK ECO	25	25	25	150	32,5	32	VCMT VCGT 1604...	US6522	GBS1111	SS1111	BT15	0,677		

Lieferung OHNE Stecknippel

DREHHALTER MIT IK AUF DIE SCHNEIDE TYP ECO



Stahlschaft

PCLNR/L

(mm)

h1 h2 b l1 l2 f



PCLNR/L 2020 K12 - IK ECO 20 20 20 125 27,4 25

CNMG
1204...

UP1111

HP1111

SP1111

RP1111

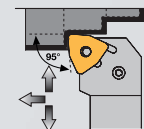
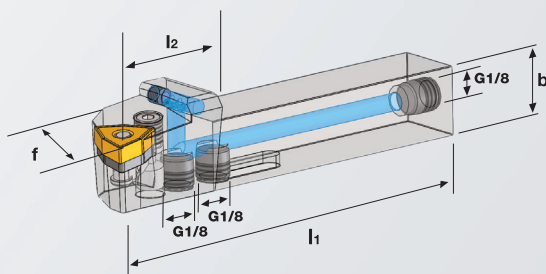
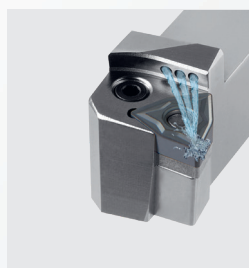
MP1111

0,428



PCLNR/L 2525 M12 - IK ECO 25 25 25 150 28 32

0,751



Stahlschaft

PVLNR/L

(mm)

h1 h2 b l1 l2 f



PVLNR/L 2020 K08 - IK ECO 20 20 20 125 25 25

WNMG
0804...

UP71011

HP1111

SP1111

RP1111

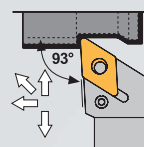
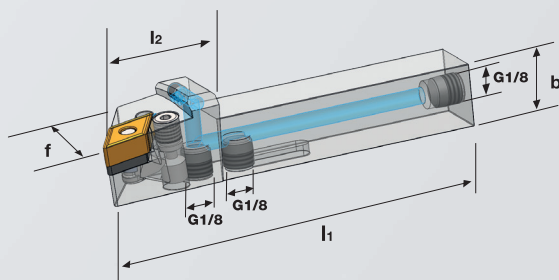
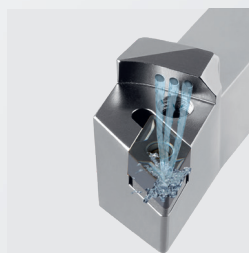
MP1111

0,420



PVLNR/L 2525 M08 - IK ECO 25 25 25 150 25 32

0,767



Stahlschaft

PDJNR/L

(mm)

h1 h2 b l1 l2 f



PDJNR/L 2020 K15 - IK ECO 20 20 20 125 25 25

DNMG
1506...

UP2421

HP2421

SP1111

RP1111

MP1111

0,411



PDJNR/L 2525 M15 - IK ECO 25 25 25 150 25 32

0,737

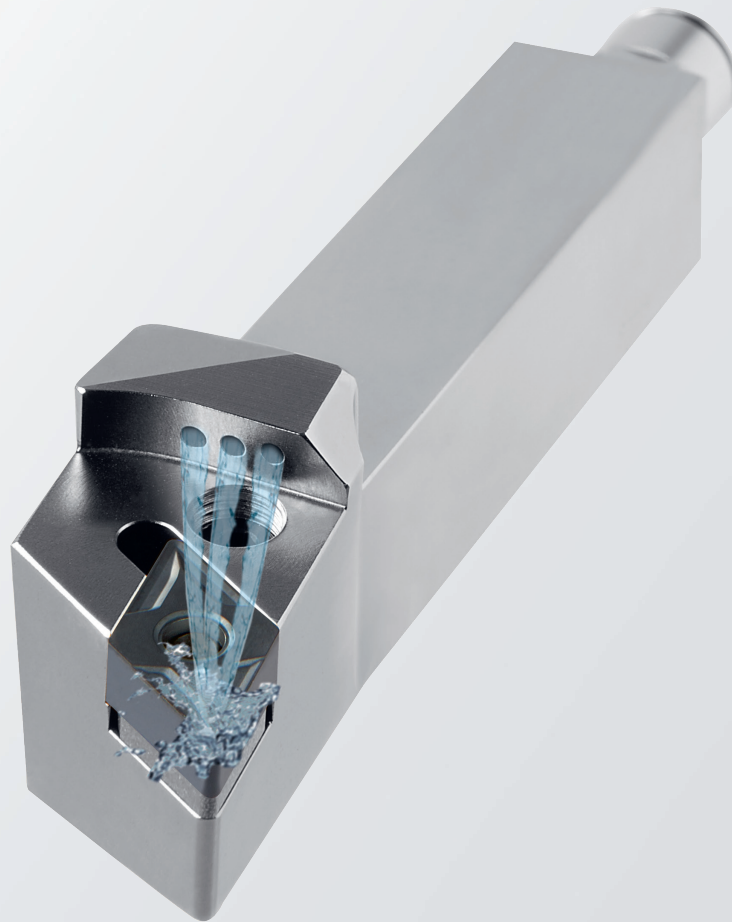


Lieferung OHNE Stecknippel



WTN Werkzeug-Technik-Nord GmbH
Emmy-Noether-Strasse 1
24558 Henstedt-Ulzburg
Germany

Tel.: 04193 889178-0
Fax: 04193 889178-88
wtn@wtn-gmbh.de
www.wtn-gmbh.de



WTN Werkzeug-Technik-Nord GmbH
Emmy-Noether-Strasse 1
24558 Henstedt-Ulzburg
Germany

Tel.: 04193 889178-0
Fax: 04193 889178-88
wtn@wtn-gmbh.de
www.wtn-gmbh.de

